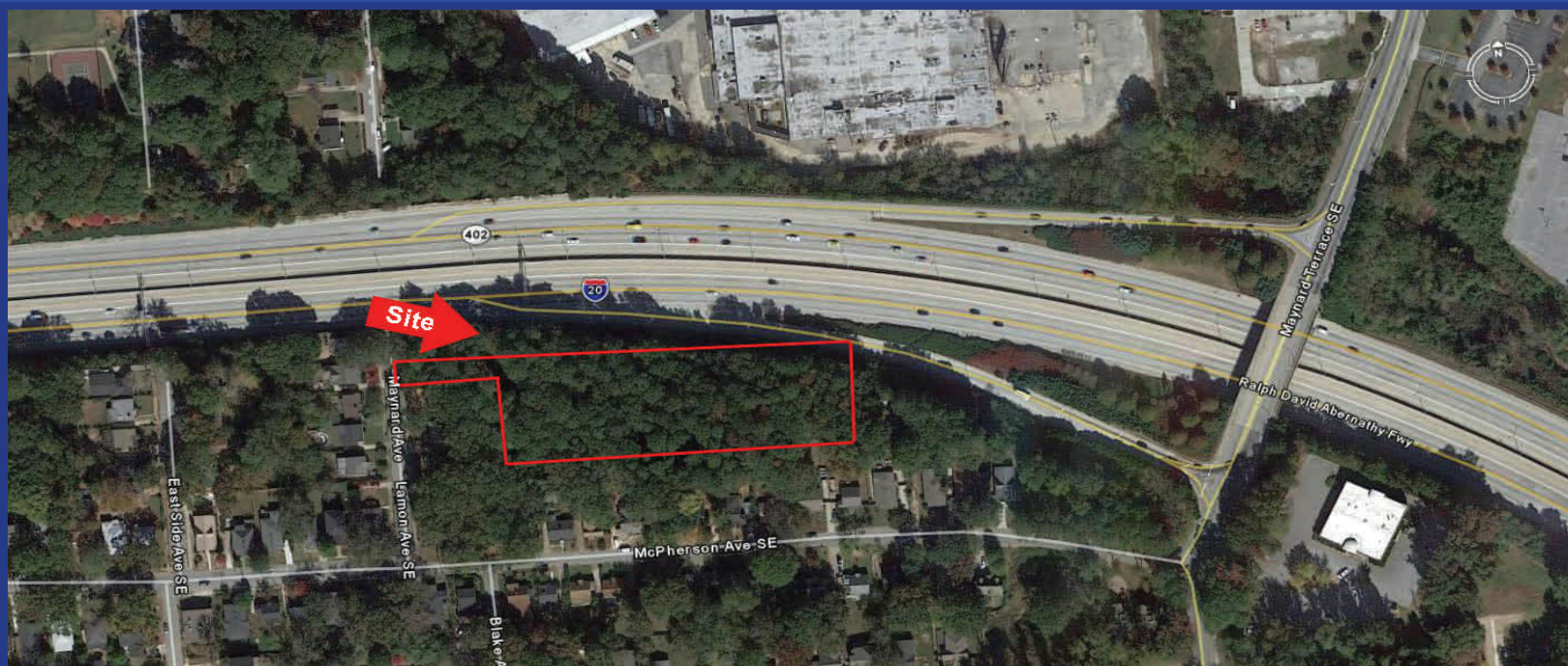


FOR SALE

1.65 +/- Acres

Maynard Avenue/Graybill Ave, Fulton County, GA



Location Description: The subject property is located on Lamon Avenue west of the intersection of Maynard Terrace and McPherson Avenue.

PROPERTY FEATURES

SIZE	1.65 +/- Acres
LOCATION	Land lots 178 of the 15th Dist of Fulton County, City of Atlanta
FRONTAGE	50 +/- feet on Lamon Avenue
PRICE	\$95,000 Total
TERMS	Cash, Property sold "As is"
ZONING	R-4A; City of Atlanta. ,Min Lot: 7,500 SqFt.,1,200 Min Home Size
UTILITIES*	All Available
SCHOOLS	Burgess Peterson Elementary, Coan Middle, Maynard High
TAXES	\$ 287/Lot; 2012 Assessment
EXCLUSIVE AGENT	Brian J. Stephens (404)845-0410



STEPHENS CAPITAL

Commercial Real Estate Services

180 Allen Road
Suite 309 South
Atlanta, GA 30328
Phone: (404) 845-0410
Fax: (404) 845-0430
Email: Info@StephensCapital.net
Web: StephensCapital.net

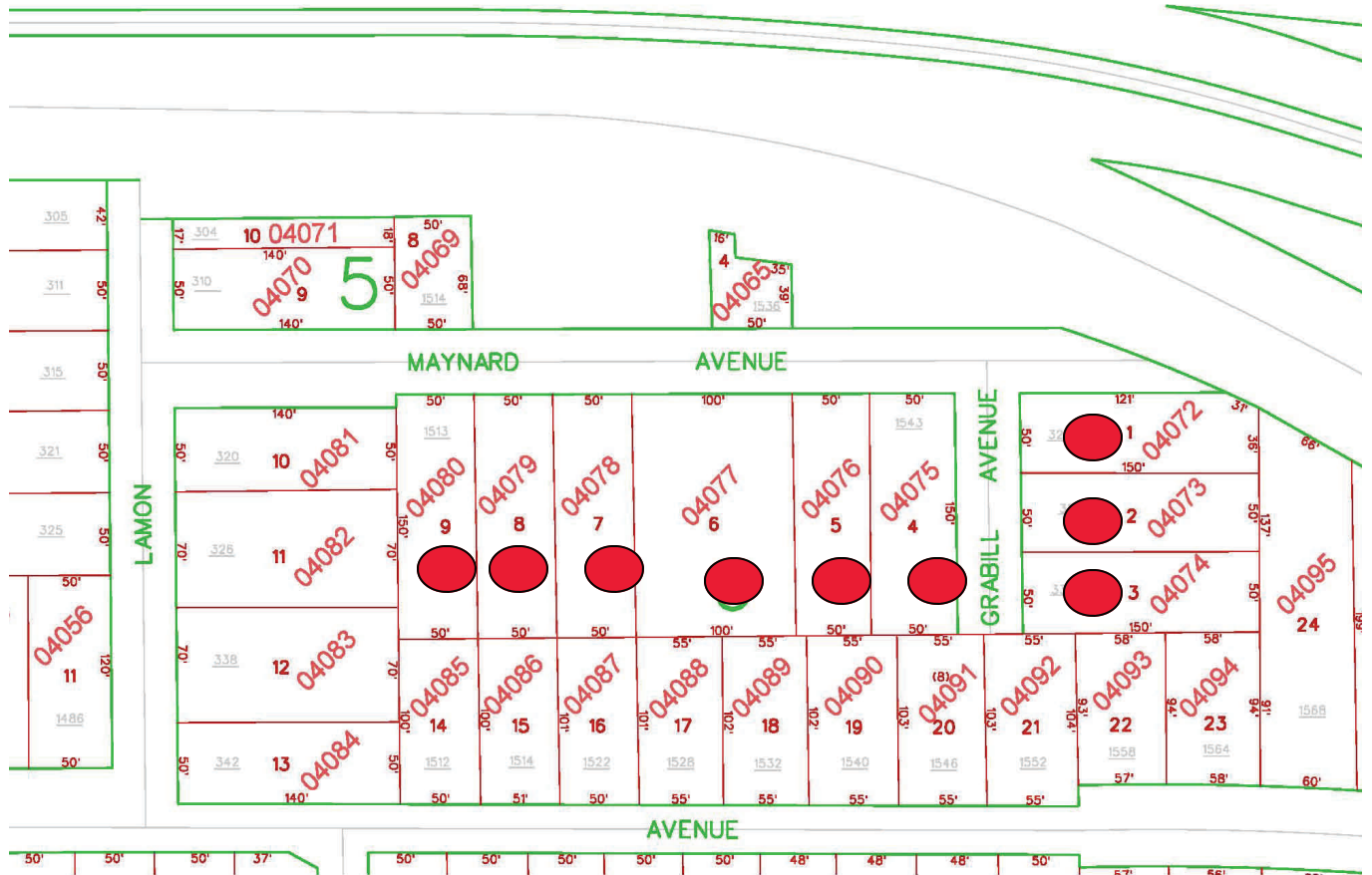
No warranty or representation, expressed or implied, is made by seller and its agents as to the accuracy of the information contained herein, and this information is offered subject to errors, omissions, changes of price or other conditions, withdrawal without notice, and to any specific listing condition imposed by our clients. Seller and its agents assume no responsibility or liability for any errors or omissions.

FOR SALE

1.65 +/- Acres

Maynard Ave/ Graybill Ave., Fulton County, GA

TAX PLAT



No warranty or representation, expressed or implied, is made by seller and its agents as to the accuracy of the information contained herein, and this information is offered subject to errors, omissions, changes of price or other conditions, withdrawal without notice, and to any specific listing condition imposed by our clients. Seller and its agents assume no responsibility or liability for any errors or omissions.



STEPHENS CAPITAL

Commercial Real Estate Services

Exclusive Agent: Brian J. Stephens * Phone: (404) 845-0410 * Fax: (404) 845-0430 * Email: Info@StephensCapital.net